

FOCI MINNESOTA CENTER FOR GLASS ARTS

2019 annual report



FOCI MCGA

Foci Minnesota Center for Glass Arts is a non-profit, community based arts organization, that touches the lives of thousands of people every year through our outreach, education, artist support, and exhibition programs.

OUR MISSION

Gather people to explore the creative potential of glass.

OUR VISION

A diverse community of dedicated makers, enthusiasts, seekers, and newcomers who feel welcomed and engaged at our center.



MEMBERS

155

VOLUNTEERS

60 people
3,453 hours

EVENTS

26 events
55,945 attendees*
**includes Minnesota State Fair*

GLASS EXPERIENCES

2,131 people

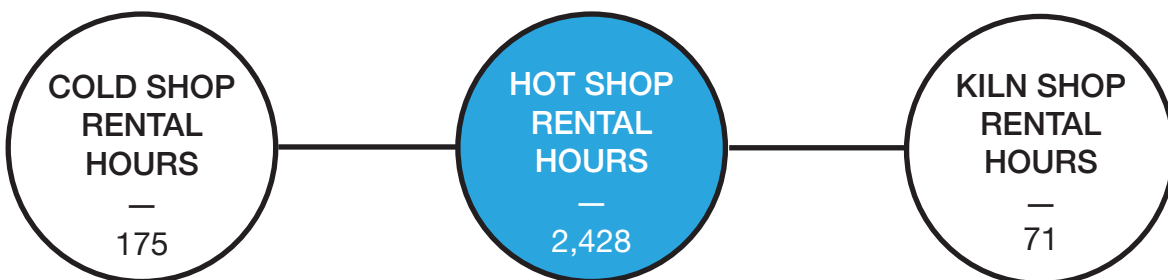
CLASSES

43 classes
252 students

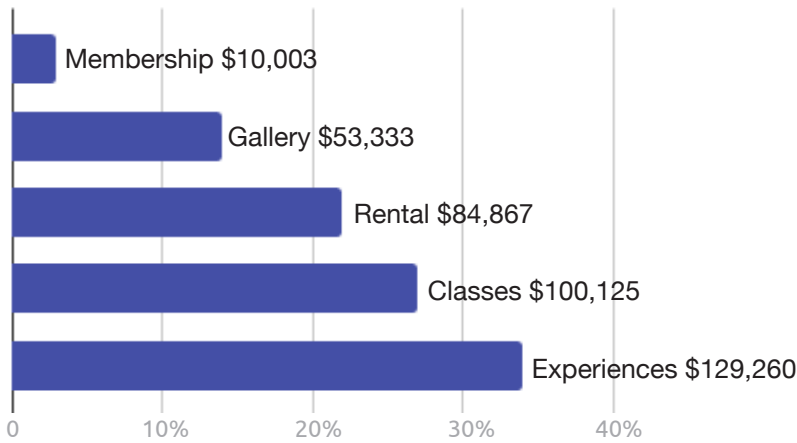
2019 HIGHLIGHTS



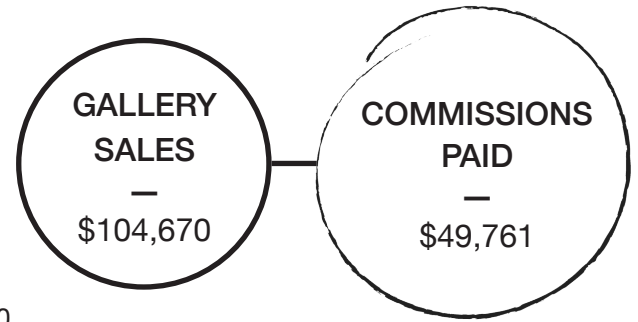
ARTIST SERVICES



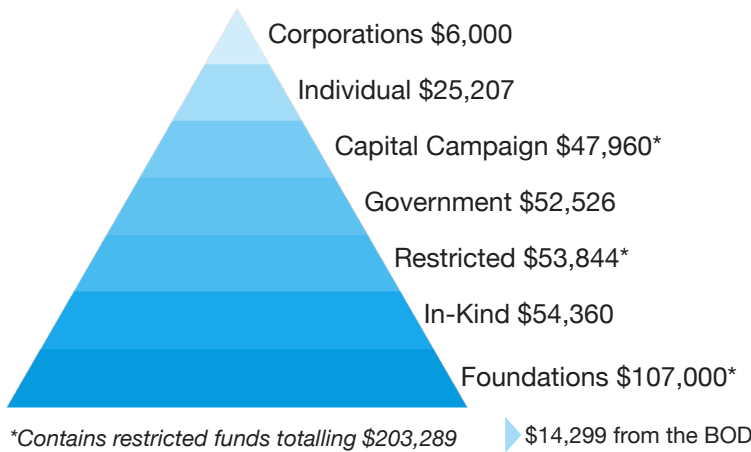
REVENUE \$377,588



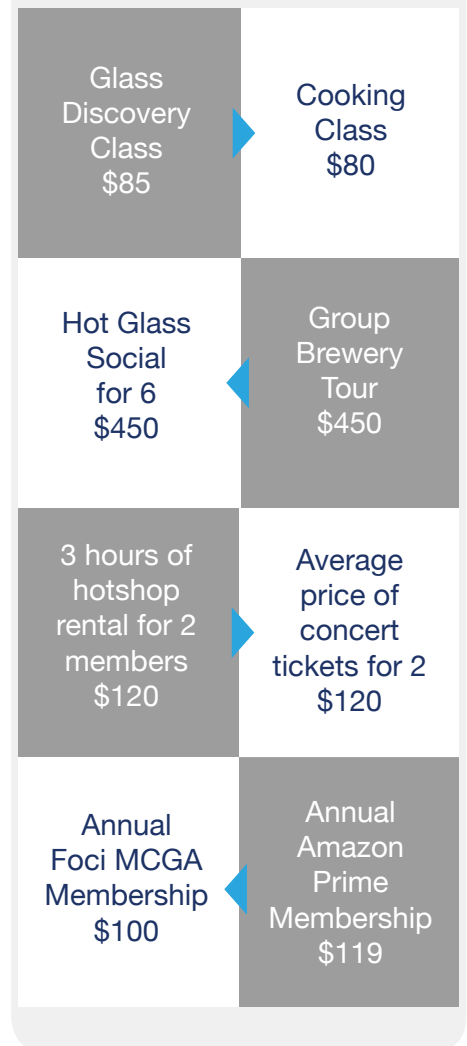
GALLERY INCOME



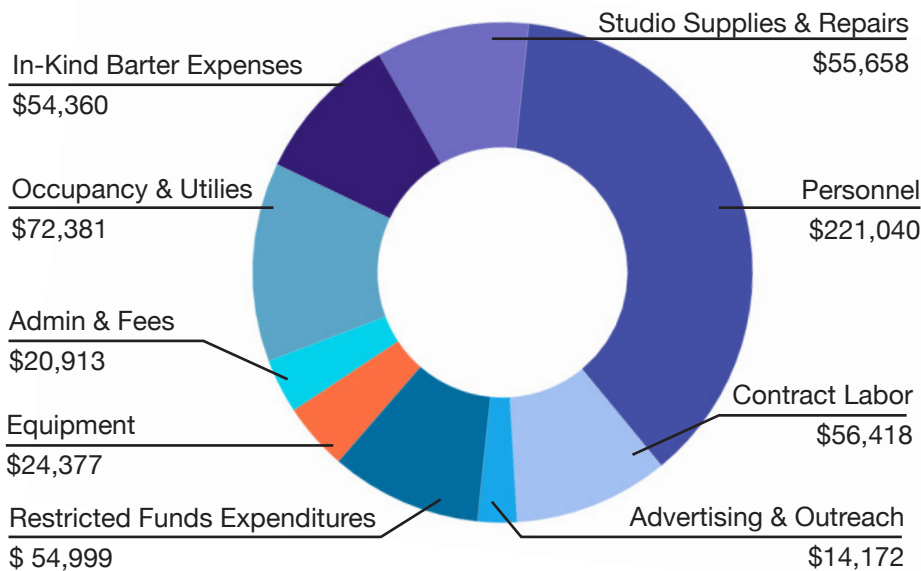
DONATIONS \$346,897



COST COMPARISONS



EXPENDITURES \$574,318



NET INCOME \$56,805

2020 BOARD OF DIRECTORS

Randilynn Christensen
President
Senior Materials Scientist: 3M

Patricia Punykova
Secretary
Programming Committee Chair
Glass Artist: Fracticality Glass

Mel Zeller, CPA (retired)
Treasurer
Senior Director Corporate Services:
UnitedHealth Group

Carrie Thornton
Governance Committee Chair
Project Manager/Functional Analyst:
Ingersoll-Rand, Inc

David Wulfman
Principal Mechanical Engineer:
Boston Scientific

John Neerland
Creative Group Director:
Colle McVoy

Jeannette Cleland
Owner- North Star Events

Gordon Hage
Securian Financial Group

Patrick Regan
James Dayton Design

ADVISORY MEMBER
Holly Jones, PhD

2019 OUTGOING BOARD MEMBERS

Eoin Breadon
Associate Professor: UWRF

Emily McBride
Glass Artist

Jeffrey Stenbom
Professor: Normandale CC

Jason Zotalis
Development Officer: Mitchell Hamline

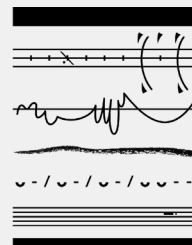
FINANCIAL PARTNERS



*Elmer L. & Eleanor J.
Andersen Foundation*



Cedarwoods Foundation



MINNESOTA
STATE ARTS BOARD



CLEAN
WATER
LAND &
LEGACY
AMENDMENT

THE MCKNIGHT FOUNDATION

2019 DONORS

\$50,000+

Holly Jones

\$10,000+

Allan Ingenito

\$5,000-\$9,999

William Smale

\$1,000-\$4,999

Patricia Punykova

James Rustad

Mel Zeller

\$500-\$999

Bryce & Kelly Pier

Shawn Kearney

\$1-\$499

Menolly Pier

Anne Preston

Jay Sandgren

Emma Schoppe

Katie Sisum

Nikki Sperry

Cherry Sullivan

Pat Sullivan

Sandra Walk

Hugh Watson

Steve Weagel

Jon Wise

David Wulfman

Peggy Zetah

Randilynn Christensen

ArtSpace

Jeff Adamski
Helen Cleveland
Paula & Gary Christensen
Martin Clift

Curtis Fiedler
First and First, LLC
Patricia Gardiner

Susannah Dodge
3 Anonymous Donors

Heather Kremen
MightyCause

Amazon Smile
9 Anonymous Donors
Jan Bilek
Westyn Bodell
Josh Braband
Richard Bunting
Candis Carpenter

Terri Gavin
Gordon Hage
Della Hansen
Steven Heng
Wendy Holmes
Ben Johnson
Edward Lentsch
Ronna Linroth
Christine Maki

In honor of
Spencer Cleland
In memory of
Michael Allan Christensen
J Cristan
Melissa Dalum
Peter Dimock
Susan Dragsten

Tasslyn Magnusson
Emily McBride
Daniel Neff
Kelly Nezworski
Linda Nezworski
Diane Nikkel

IN-KIND DONATIONS

Dangerous Man Brewing
Grey, Plant, and Mooty
Second Sight Visuals
Workhorse Coffee Bar

Charlie Hansen
Chris Hart
Isanti Distillery
Propel for Nonprofits

Allan Ingenito
ArtSpace
Jake Speich
Tee Squared

**FOCI MINNESOTA
CENTER FOR
GLASS ARTS**

2010 East Hennepin Ave, Minneapolis, MN 55413
612-759-8476
mnglassart.org